

PLANTING OR DELIVERY CHARGES

- ◆ Charges are per tree/plant and cannot be less than the minimum planting or delivery fee. See Next Page.
- ◆ Delivery **INCLUDES** setting the tree/plant next to your planting site. Delivery **DOES NOT** include digging the hole, setting in the hole, staking, removing wire basket, etc. Prices are negotiable for difficult site conditions.
- ◆ Planting **INCLUDES** delivery, digging the hole, amending the soil, staking and strapping the tree, and clean up. If you purchased Mykes at the nursery they will apply it during planting. Prices will be negotiated for difficult site conditions including but not limited to: access, digging conditions, stump/root removal, etc. Planting prices also include calling 811 **ONE TIME** to have your public utilities marked. **Pictures must be emailed to the planters within 24 hours of the day you purchase the trees for access approval.**
- ◆ Planting **DOES NOT INCLUDE** tree/shrub/root removal from previous planted trees UNLESS the tree being removed is still under the Nursery's guarantee and was originally planted by the planting companies. It does not include repairs to private lines like irrigation/sprinkler lines, low voltage electric lines, private electric lines, private gas lines, septic, well, etc. Customers are responsible for repairs to private lines as the planters will have no idea where those lines are.
- ◆ If your tree is tagged as a **SPECIAL ACCESS TREE ^^** it is big! It also requires using larger equipment to handle and plant. Add \$500 to your planting total for the mobilization and use of the larger equipment. This is per day basis at one planting site. A minimum of 8' is required to plant these trees. **Pictures must be emailed to the planters within 24 hours of the day you purchase the trees for access approval.**
- ◆ If you live in Zone 5 (see yellow chart, page 9) add \$45 to your planting/delivery total. This is to cover extra cost due to the combination of spread out stops, difficult sites, and/or harder digging conditions. If your address is over 26 miles from the nursery OR outside of El Paso county, we will need to get a quote from the tree planting companies to plant in your area.

ALL Planting & Delivery Charges are paid AT the time of service ON your planting day TO the planting company, NOT to the nursery. They accept Check, Cash, & Credit Cards. A 3.25% processing fee is added for credit card payments.

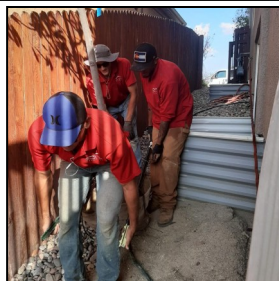
EMAIL pictures of your invoice and your planting site showing access from the street to you planting site to: trees@FrontRangePlanting.com



Mini Skids (left) require a minimum of 43" access.

48" for trees 10' and taller or 4" caliper & bigger.

Special Access trees require an 8' opening for the larger equipment (not shown).



This site ^ had very narrow access due to window wells. The trees had to be hand carried in. This site had additional charges.

**CALL 811
BEFORE
YOU DIG!
IT'S THE LAW!**

The Planting Companies are Independent Contractors, and not part of Heidrich's Colorado Tree Farm Nursery LLC

Per Tree
Planting Charge

Per Tree
Delivery Charge

B&B EVERGREEN TREES

Up to 6.5'	\$225
7'-7.5'	\$260
8'-8.5'	\$290
9'-9.5' *	\$375
10'-10.5' *	\$450
11'-11.5' *^^	\$450
12'-16.5' ^^	\$650
17'-20' ^^	\$750

OR

\$175
\$210
\$240
\$325
\$400
\$400
\$600
\$700

B&B DECIDUOUS TREES

Up to 2.25"	\$215
2.5"-2.75"	\$255
3"-3.25"	\$310
3.5"-3.75" *	\$365
4"-4.25" *	\$455
4.5"-4.75" *	\$470
5"-5.25" *^^	\$515

OR

\$165
\$205
\$260
\$315
\$405
\$420
\$465

B&B MULTI-STEM TREES

Up to 6'	\$205
6'-8'	\$210
8'-10'	\$250
10'-12'	\$275
12'-14' *	\$305
14'-16' *	\$340
16'-18' *	\$415

OR

\$155
\$160
\$200
\$225
\$255
\$290
\$365

CONTAINER TREES

#5 - #7	\$75
#10 - #18	\$145
#20 - #25	\$205
#30	\$235
#45	\$260

OR

\$15
\$95
\$155
\$185
\$210

CONTAINER SHRUBS

#1	\$14
#2 - #5	\$28
#6 - #7	\$65
#10	\$95
#15	\$115

OR

\$9
\$23
\$23
\$45
\$65

The minimum Planting Charge will not be less than:

Planting with ANY B&B Trees/Shrub	\$325
Planting with ONLY Container Tree/Shrub	\$285

The minimum Delivery Charge will not be less than:

Delivery with ANY B&B Tree/Shrub	\$275
Delivery with ONLY Container Tree/Shrub	\$235

If your address is in these **Zone 5 zip codes add \$45** to your total. This is due to the size of the zone, distance from nursery and between stops, access to planting sites, & digging conditions in these areas:

**80817 80904 80907 80911 80928
80829 80905 80909 80914
80903 80906 80910 80926**

ALL Planting & Delivery Charges are paid at the time of service ON your planting day TO the planting Companies. NOT to the nursery. We are separate companies and invoice separately.



ADDITIONAL CHARGES MAY APPLY IF YOU HAVE:

Additional zip codes that may have associated travel fees: 80914, 80106, 80808, 80809, 80829, 80833, 80840, 80864, 80929, 80930, 80926, 80928 and 80940

Any Obstacles or Obstructions (i.e. steps, retaining walls, gates, window wells, AC units, etc.)

Removal of Pet Waste

ANY Tree, Stump, & Root Removal

Basket Removal- Old Baskets from Previously Planted Trees Left in the Hole

Staking of Pre-Existing Trees

Removing Stakes on Existing Trees

Moving Boulders

Excessive Dirt- More Than One Wheelbarrow Per Tree

Excessive Rock or Mulch- Over 3" Deep

Rock 2" or Larger (i.e., Cobble Stone/Rip Rap)

Scan for
Planting &
Delivery
Information



* TREES THAT MAY REQUIRE A MINI SKID LOADER

^^ SPECIAL ACCESS TREES